

About ZWCAD

Developed by ZWSOFT CO., LTD.(Guangzhou), which has helped 900,000 users from 90 countries create amazing things, ZWCAD is a powerful, reliable and DWG compatible CAD solution for worldwide users. Available in 15 languages, it provides innovative, collaborative and customizable features to designers and engineers in various industries such as AEC and MFG.

THE CHOICE OF OVER 900,000 USERS FROM 90 COUNTRIES.

ZWCAD Reseller

ZWSOFT CO., LTD.(Guangzhou)
Add: Room 01-08, 32/F, Pearl River Tower,
No.15, Zhujiang West Road, Tianhe District,
Guangzhou, China, 510623

Tel: +86-20-38289780
Fax: +86-20-38288676
Email: sales@zwssoft.com
www.zwssoft.com/product/zwcad

ZWCAD



ZWCAD



ZWSOFT

TOP 5 REASONS TO CHOOSE ZWCAD

1. Seamless DWG Compatibility
2. Code-level Compatible API
3. Smooth Workflow Between Desktop And Mobile Devices
4. Time-saving Innovative Tools
5. Perpetual License With Flexible Upgrades

FASTER AND FRIENDLIER

What will you feel about ZWCAD at first hand? FAST. We know how cool it will be to open drawings, create design and share works at a high speed. Now with the upgraded graphic engine, it's fast and smooth, unprecedentedly.

*All details
for you
to create
amazing
things.*

CONTENT

1. Before You Start: Continue Your Habits

- Seamless DWG Compatibility
- Familiar Classic & Ribbon Interfaces
- Customize User Interface

2. Start From Scratch: Visualize Your Ideas

- Associative Dimension
- Images
- Multi-line Text
- Revision Cloud
- External References
- Layer
- Block
- Mleaders
- Table
- Super Hatch
- Lockup / Unlock

3. Further Your Design: Tools Saving Your Time

- Tool Palettes
- Design Center
- Dynamic Block
- Annotative Object
- All-in-One Reference Manager
- Quick Calculator
- Block Attribute Manager
- File Compare
- Associative Array
- Data Link
- SmartMouse
- SmartVoice
- SmartSelect

4. 3D Modeling: From 2D To 3D

- Viewing
- Modeling
- Visualizing

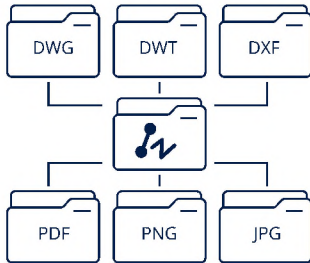
5. Share It: Easier Collaboration

- Plot
- Smart Plot
- Publish
- Etransmit
- CAD Pockets

6. Make It Your Own: Powerful Customization

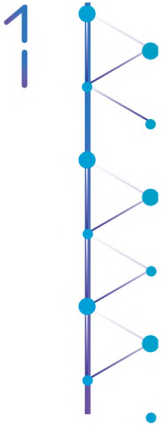
- Code-level Compatible API
- Lisp Debugger
- Development Service

BEFORE YOU START: CONTINUE YOUR HABITS



Seamless DWG Compatibility

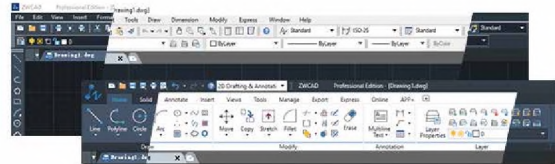
The seamless .dwg compatibility enables you to open and continue your previous design work, and share your drawings with coworkers and clients, making the workflow more fluent.



2

Familiar Classic & Ribbon Interfaces

Classic and Ribbon menus can be displayed at the same time and toggled easily without restarting ZWCAD. What's more, both Dark and Light color schemes are available to satisfy your different preferences.



3

Customize User Interface

You can customize your ZWCAD menu, commands, toolbars, hotkeys, and aliases. Together with the familiar interface and easy-to-use commands, ZWCAD brings you comfortable design environment to conduct efficient design work.

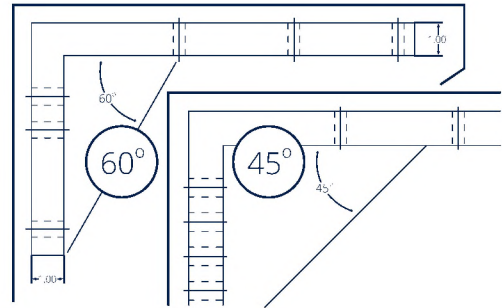


START FROM SCRATCH: VISUALIZE YOUR IDEAS

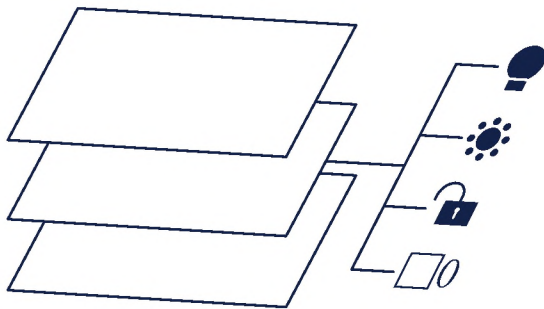
1

Associative Dimension

Dimensions can be generated to annotate values, locations and orientations. They can be automatically adjusted along with the geometric objects, which is intelligent and ensures that the dimensions are the updated ones.



Layer



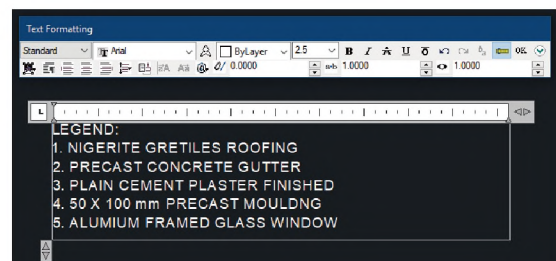
2

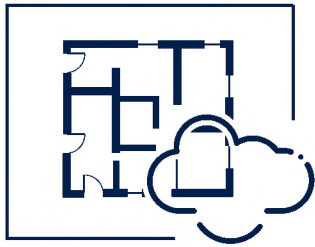
Layers help you easily manage different types of objects in design. By putting different objects into different layers, you can conveniently turn them on and off, or change their properties in a powerful Layer Manager palette during the drafting process.

3

Multi-line Text

The In-place MText Editor is the best way to create multi-line texts with abundant text styles and paragraph settings. When you edit the texts inside the editor, what you see is what you get, which means that the texts in the drawing can be updated instantly.





Revision Cloud

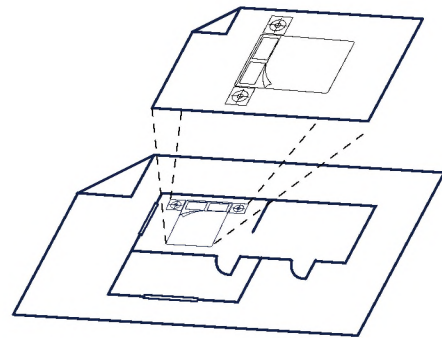
4

Revision clouds help call attention to the areas of a drawing that contain revisions. You can also convert objects such as circles, ellipses or polylines to revision clouds or select other styles.

By inserting DWG files as external references, everyone in your team can collaborate together on large drawings without increasing the size of drawing files by much.

5

External References



6

By inserting and editing images in various formats such as BMP, TIFF, GIF, JPG, ECW, JP2 and TARGA easily with ZWCAD's image processing engine, you can conveniently refer to or design on them to assist your drawings.

Images

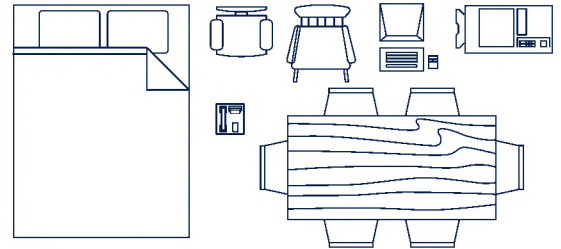


START FROM SCRATCH: VISUALIZE YOUR IDEAS

7

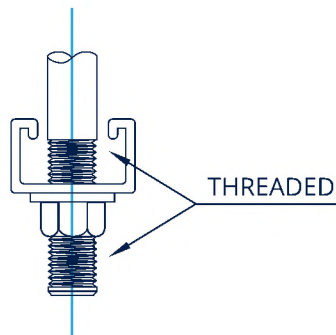
Block

You can create a block through associating several objects, and reference or use it in the same or a different drawing, making your design more convenient and standardized.



Mleader

8



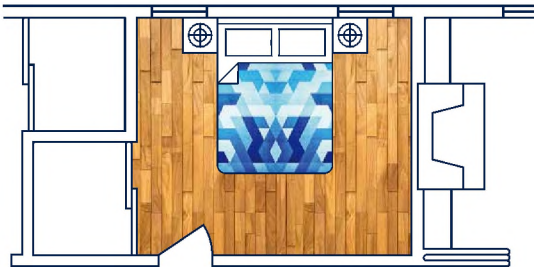
Mleader helps connect multiple leaders for a same annotation, or add a leader to an existing Mleader object, saving a lot of time because you can immediately check all the leaders which belong to a specific annotation.

9

Table

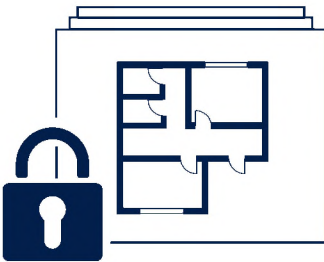
You can easily create and modify tables in your drawings to clearly present data, materials and other information.

CONC. PILE SCHEDULE			
MARK	PILE NO.	LENGTH	VERTICAL REINFORCEMENT
P - 1	16"[406]	25' - 0"[7620]	4 - 15Mx19' - 0"[5791]
P - 2	16"[406]	30' - 0"[9144]	4 - 15Mx23' - 0"[7010]
P - 3	16"[406]	34' - 0"[10363]	4 - 15Mx26' - 0"[7925]
P - 4	16"[406]	38' - 0"[11582]	4 - 15Mx32' - 0"[9754]
P - 5	24"[610]	32' - 0"[9754]	6 - 20Mx24' - 0"[7315]
P - 6	24"[610]	36' - 0"[10973]	6 - 20Mx27' - 0"[8230]



Super Hatch 10

Not only can you fill the enclosed area or object with a solid, gradient or predefined hatch pattern with Hatch, but blocks, external drawings or images can also be used as hatch patterns with Super Hatch. Your hatch patterns are customizable.



Lockup / Unlock 11

You can lock an object with a password by Lockup function so that it is visible but cannot be edited, avoiding making changes to it mistakenly. You can also make it editable again by the Unlock function.

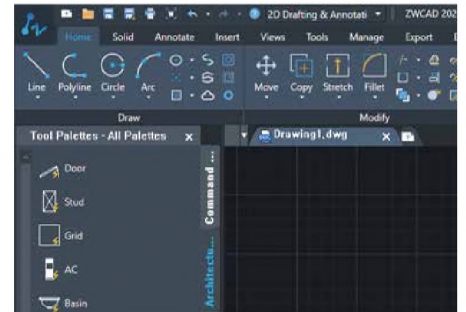


FURTHER YOUR DESIGN: TOOLS SAVING YOUR TIME

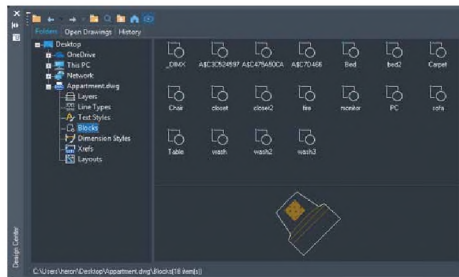
1

Tool Palettes

The Tool Palettes enable you to store and manage all your frequently-used design resources and functions, no matter it's a block, a hatch pattern or a red dash line, with all the properties like colors, layers and line types. You can directly use them in your drawings, saving you a lot of time.



Design Center



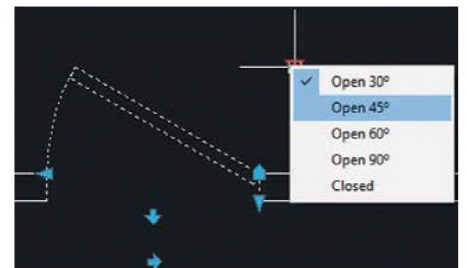
2

It allows you to search and access any CAD resources stored in your computer or other computers on your local network. You can insert layers, line types, text styles, blocks, etc. from other drawings to the current, enabling you to design with more resources.

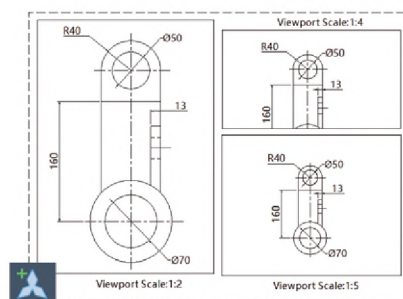
3

Dynamic Block

Dynamic Blocks can be inserted and displayed, which makes it more convenient for you to modify the blocks simply by clicking the grips.



Annotative Object



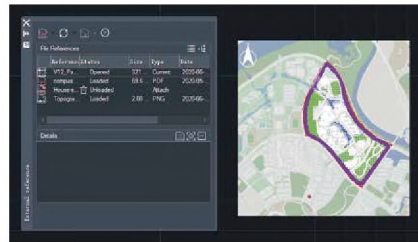
4

Annotations like dimensions and texts can be set as Annotative Objects, which means that their sizes can be adjusted automatically according to different view scales in Model space or Layout viewport, to guarantee their readability on screen and in plotting.



All types of Xref managers have been integrated into one, so that you could manage assorted reference files more efficiently.

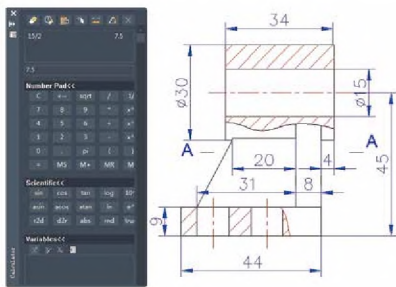
5



All-in-One Reference Manager



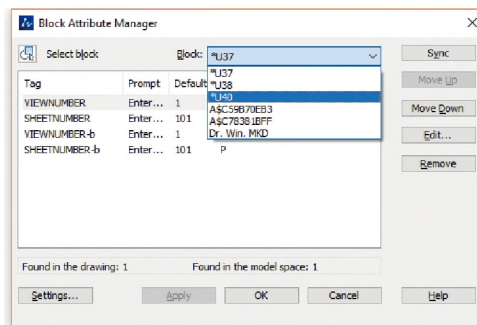
6



Without switching the windows, you can calculate in ZWCAD just as you would with a desktop calculator.

Quick Calculator

You can easily view, edit, and synchronize the attributes that have already been attached to a block in the current drawing with the Block Attribute Manager.



Block Attribute Manager

7

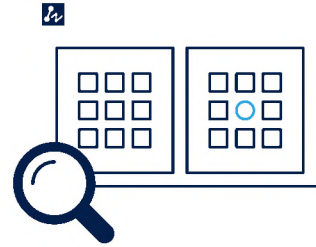


FURTHER YOUR DESIGN: TOOLS SAVING YOUR TIME

8

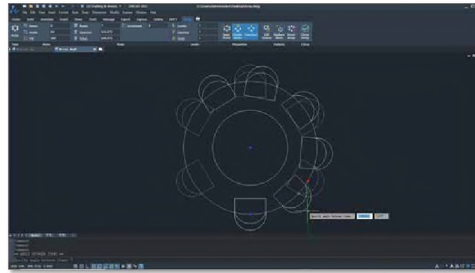
File Compare

File Compare helps you spot even the most minor differences between two similar drawings by highlighting them in different colors. You can easily find the distinctions between blocks, attributes and texts.



9

Associative Array

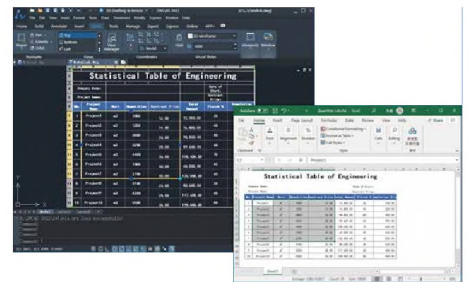


Form rectangular, path, or polar arrays of objects with flexible settings and adjust them by dragging grips.

10

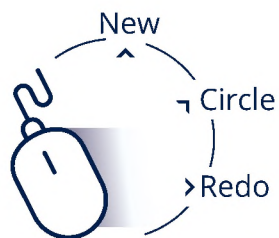
Data Link

Link with external tables intelligently, to realize bidirectional and synchronized data update.



11

SmartMouse

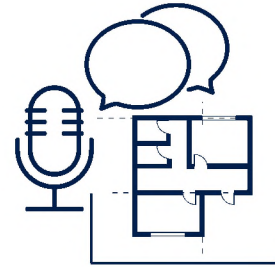


It enables you to trigger your frequently-used commands by moving your mouse on a certain track, which notably accelerates your design. You can also customize mouse actions for different commands.

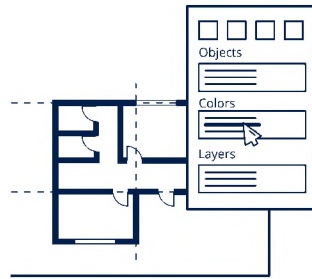


12 SmartVoice

You can save your voice information as an entity in your drawing with SmartVoice, making it convenient for you to communicate with coworkers by adding annotations or comments as voice messages.



13 SmartSelect



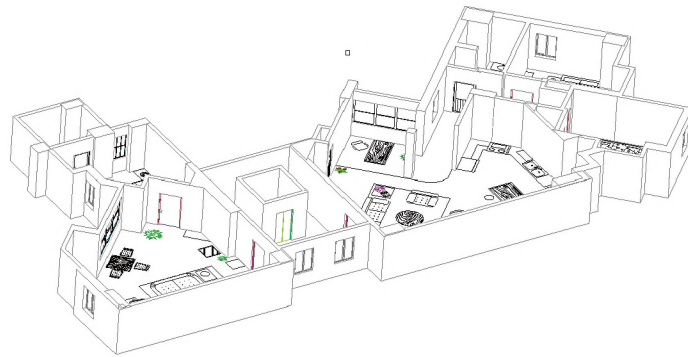
It enables you to find similar entities with simple properties selection. When you need to find a certain type of objects without considering other complicated properties such as the exact position, you no longer have to use FIND command with complex properties selection.



FURTHER YOUR DESIGN: TOOLS SAVING YOUR TIME

1

You can view your model freely by 3DORBIT command, and present it in a perspective view using DVIEW, making it much easier for others to understand your model.

**Viewing****Modeling**

2

You can easily create and modify 3D models with modeling tools such as Solid, Surface and Mesh.

3D MODELING: FROM 2D TO 3D

3

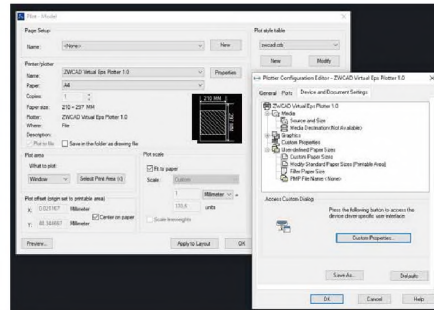
You are able to set different visual styles like Wireframe, Hidden and Shade, and get a photorealistic view with rendering.



Visualizing

SHARE IT: EASIER COLLABORATION

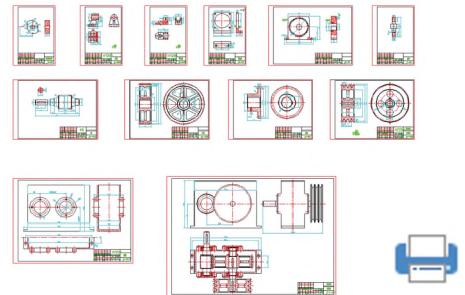
1 Plot



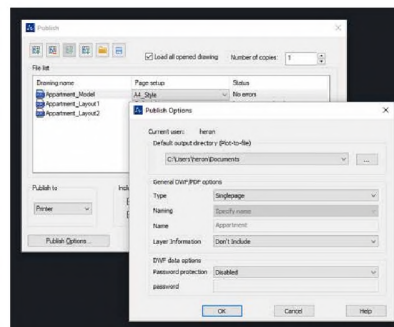
You can plot drawings to both files and paper with STB or CTB style, and finetune the results by overriding layer properties in viewports, adding a plot stamp or setting the paper size, plot scale, etc.

2 Smart Plot

With Smart Plot, multiple frames can be plotted all at once from the Model space by ZWPLOT command. A more efficient plotting process is realized.



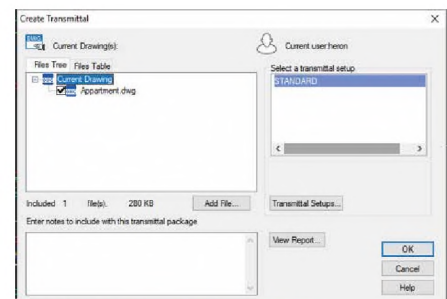
3 Publish



A drawing in Model space and Layout viewport can be published to a single or multi-page DWF file or plotter, which allows you to share drawings with coworkers or clients safely and quickly.

4 Etransmit

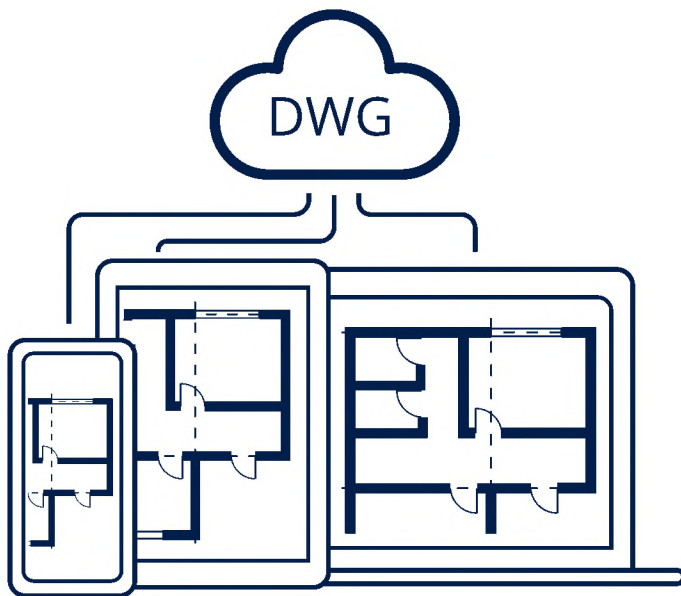
Etransmit improves the collaboration efficiency between you and your clients – with a simple click, all of the related drawings, images, external references, fonts and other support files can be collected and put into one package.



CAD Pockets

5

CAD Pockets provides a mobile and cloud-based solution to you, which enables you to view, edit, annotate, share and discuss .dwg drawings with your colleagues anywhere and anytime with online storage.

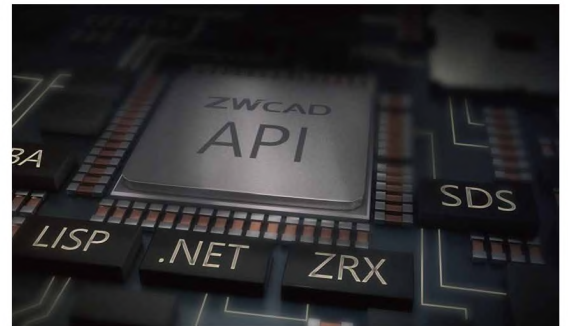


MAKE IT YOUR OWN: POWERFUL CUSTOMIZATION

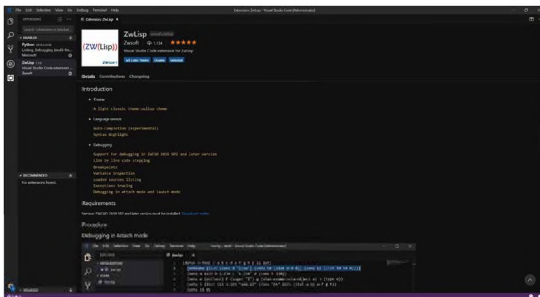
1

Code-level Compatible API

To better serve your needs, we've built a developer network for third-party developers to work on an array of add-ons, which make your design easier and more efficient.



Lisp Debugger



2

Developed based on VS Code from Microsoft™, Lisp Debugger is now available for you to debug and modify lisp programs easily. Now you can write your lisp programs more accurately.

3

Development Service

With customized development service based on ZWCAD, you can make ZWCAD fitter with your workflow. If you need relevant service, please feel free to contact our local resellers to get more information.

ZWCAD VS ACAD

		ZWCAD		ACAD	
		Std	Pro	LT	FULL
Compatibility	Compatible with DWG/DXF	●	●	●	●
	Import DGN	●	●	●	●
Interface	Classic and Ribbon Interfaces	●	●	●	●
	Customize User Interface (CUI)	●	●	●	●
	Dark / Light UI	●	●	●	●
	Tool Palettes	●	●	●	●
	Properties Palette	●	●	●	●
	Dynamic Input	●	●	●	●
	Auto-complete Command Entry	●	●	●	●
	Drawing Tab Switching	●	●	●	●
Annotation	Adaptive Grid	●	●	●	●
	Leader & MLeader	●	●	●	●
	Associative Dimension	●	●	●	●
	Text and MText	●	●	●	●
	Annotative Object	●	●	●	●
	Recloud	●	●	●	●
	Text In-place Editing	●	●	●	●
	Hatch / Gradient Hatch	●	●	●	●
	Super Hatch	●	●	●	●
	Tables & Table Styles	●	●	●	●
Layer	Field	●	●	●	●
	Layer Properties Manager	●	●	●	●
	Layer Filter	●	●	●	●
Xref, Block & Attribute	Layer State Manager	●	●	●	●
	OLE	●	●	●	●
	Raster Images	●	●	●	●
	Underlay (DWG, DWF(x), PDF)	●	●	●	●
	Xrefs In-place Editing	●	●	●	●
	Multiple Blocks Inserting	●	●	●	●
3D	Block Attribute Manager	●	●	●	●
	Solid, Surface, Mesh Modeling		●		●
	Photorealistic Rendering		●		●
	Visual Style	●	●		●
	ACIS Viewing	●	●	●	●
	3D Orbit	●	●		●
Programming	IFC Import	●	●		●
	MNU, MNS and MNL File Support	●	●	●	●
	ActiveX API	●	●		●
	LISP Support	●	●		●
	Visual Basic for Applications (VBA)		●		●
	Runtime Extension (ZRX/ARX)		●		●
	.NET		●		●
Output	Lisp Debugger	●	●		●
	CTB & STB Plot Style	●	●	●	●
	Plot	●	●	●	●
	Publish	●	●	●	●
	Export	●	●	●	●
	eTransmit	●	●	●	●
Innovation	Data Extraction	●	●	●	●
	SmartMouse	●	●		
	SmartVoice	●	●		
	SmartSelect	●	●		
	SmartPlot	●	●		
Others	Barcode & QR Code	●	●		
	File Compare	●	●	●	●
	Quick Calculator	●	●	●	●
	Match Property	●	●	●	●
	Group	●	●	●	●
	Quick Select	●	●	●	●
	Multiline and Multiline Style	●	●	●	●
	Parametric Drawing			●	●
Express Tools	●	●		●	

*Only available when the Architecture toolbar is loaded

SEE HOW CAD CUSTOMERS COMMENT ON ZWCAD



"ZWCAD makes designing and processing much faster in large projects. Together with a reasonable price, it really helps maintain and improve the quality of our work."

Guilherme, CIO of CASAIS Group




"We use ZWCAD to edit and simplify design work. A wide range of functions of the product allow us to work comfortably without any problem. The functionality of ZWCAD certainly meets our requirements."

Jadwiga Sztelwander, Director of Deltamarin Poland



"It is perfectly compatible with our former CAD solution, and enables us to cowork with the downstream seamlessly. It is easy-to-use so that our designers don't need to learn again."

Adaphol Nillaor, Project Relation of CH. Karnchang



All trademarks, trade names or company names referenced herein are used for identification only, and belong to their respective holders. Copyright 2008-2022 ZWSOFT CO., LTD.(Guangzhou) All rights reserved. Reproduction in any form without the permission of the copyright holder is prohibited by law.